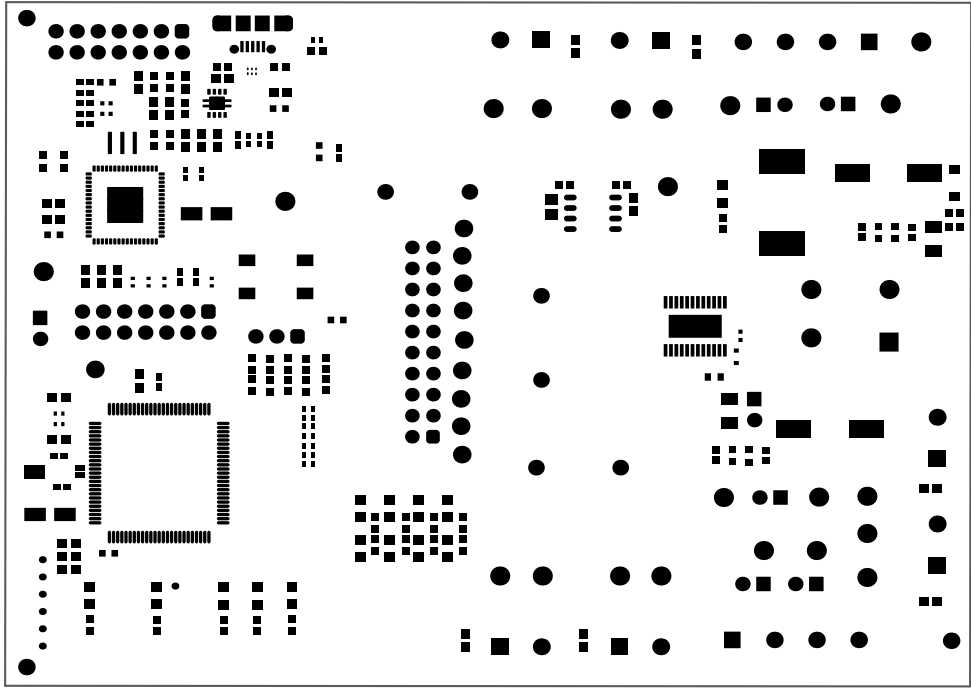
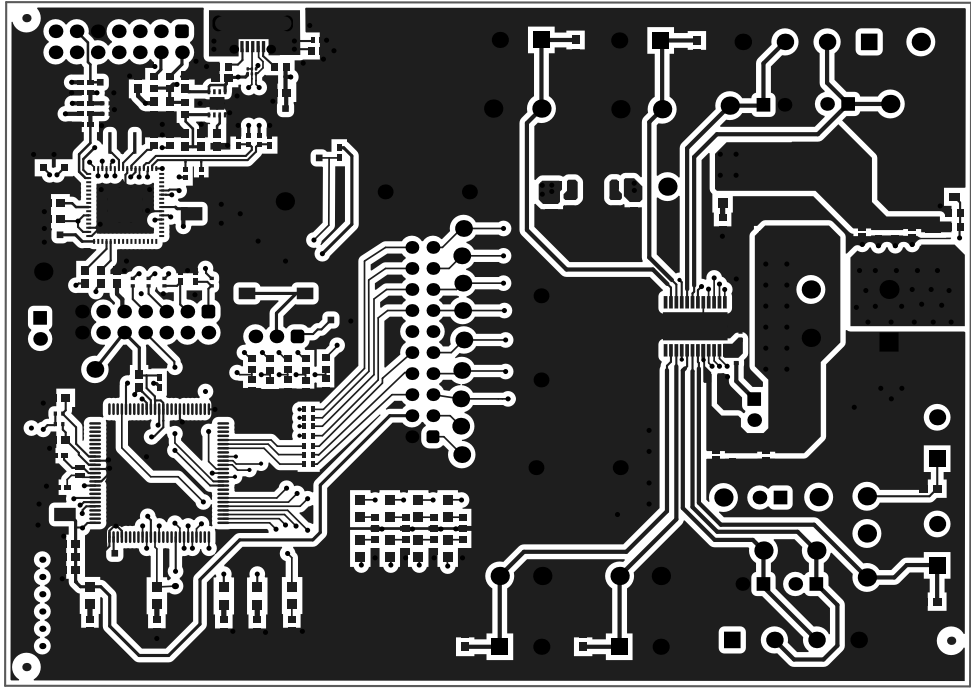


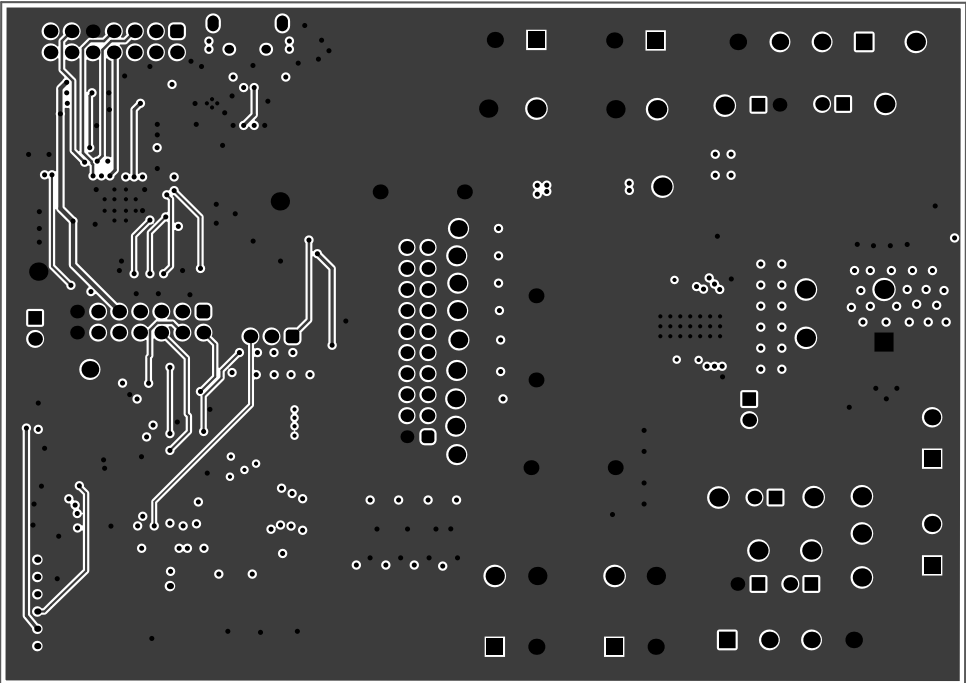
ALL ARTWORK VIEWED FROM TOP SIDE	BOARD #: DRV81242EVM	REV: E1	SVN REV: Not in version control
LAYER NAME = M1 Board Outline	TID #: N/A		
PLOT NAME = Multilayer Composite Print	GENERATED : 19-06-2024 10:29:59 AM	TEXAS INSTRUMENTS	



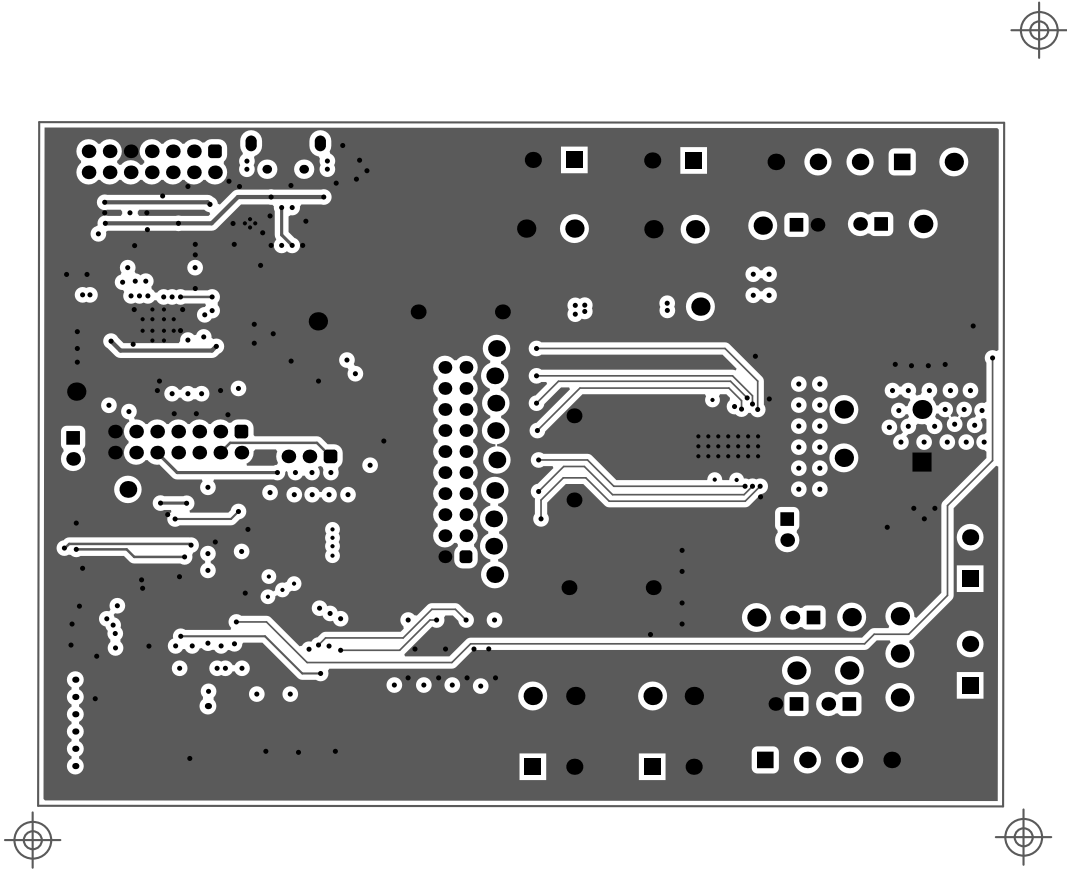
ALL ARTWORK VIEWED FROM TOP SIDE	BOARD #: DRV81242EVM	REV: E1	SVN REV: Not in version control
LAYER NAME = Top SolderOutline	TID #: N/A		
PLOT NAME = New PrintOut 1	GENERATED : 19-06-2024 10:30:00 AM	TEXAS INSTRUMENTS	



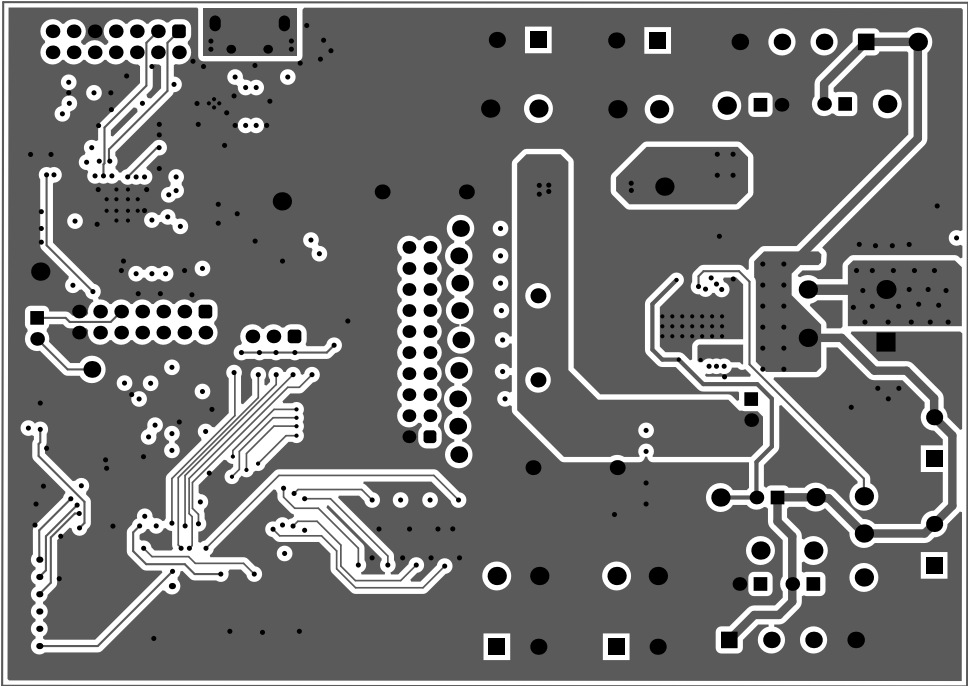
ALL ARTWORK VIEWED FROM TOP SIDE	BOARD #: DRV81242EVM	REV: E1	SVN REV: Not in version control
LAYER NAME = <del>Top Layer</del> Outline	TID #: N/A		
PLOT NAME = New PrintOut 1	GENERATED : 19-06-2024 10:30:02 AM	TEXAS INSTRUMENTS	



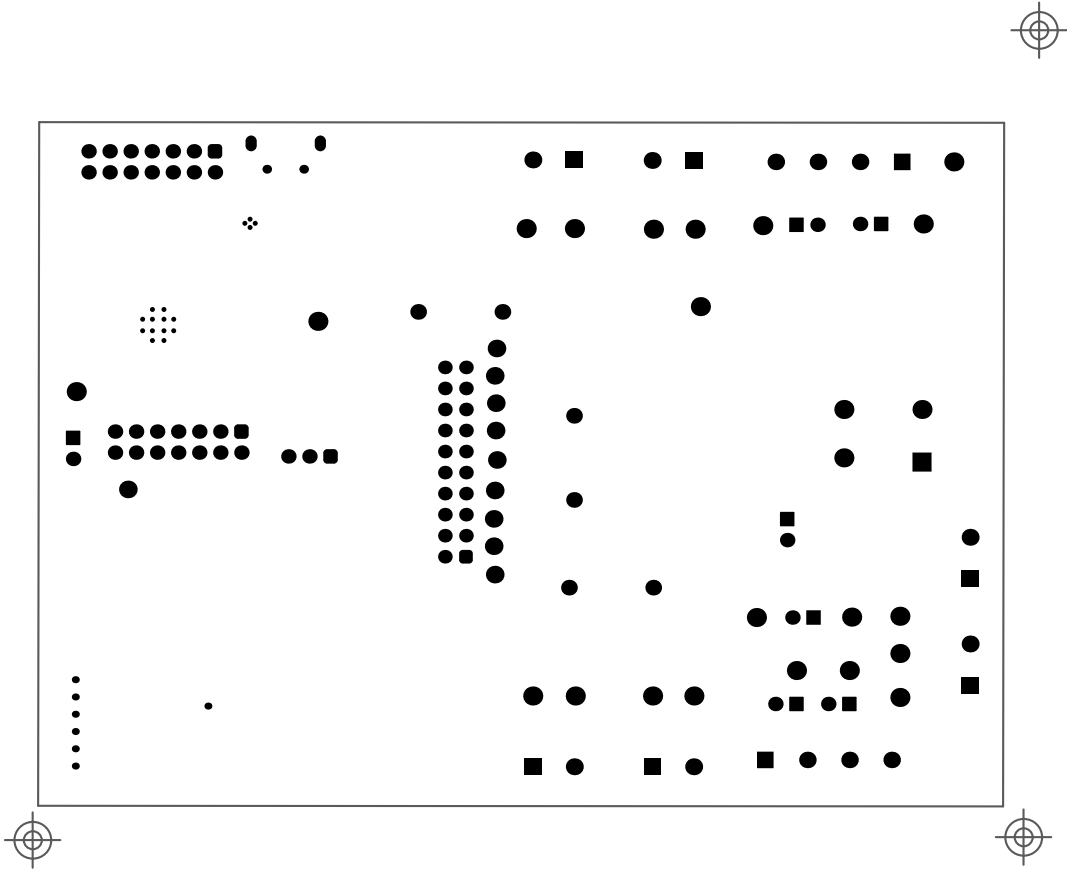
ALL ARTWORK VIEWED FROM TOP SIDE	BOARD #: DRV81242EVM	REV: E1	SVN REV: Not in version control
LAYER NAME = M1 Board Outline	TID #: N/A		
PLOT NAME = New PrintOut 2	GENERATED : 19-06-2024 10:30:04 AM	TEXAS INSTRUMENTS	



ALL ARTWORK VIEWED FROM TOP SIDE	BOARD #: DRV81242EVM	REV: E1	SVN REV: Not in version control
LAYER NAME = M1 Board Outline	TID #: N/A		
PLOT NAME = New PrintOut 3	GENERATED : 19-06-2024 10:30:05 AM	TEXAS INSTRUMENTS	



ALL ARTWORK VIEWED FROM TOP SIDE	BOARD #: DRV81242EVM	REV: E1	SVN REV: Not in version control
LAYER NAME = <del>Bottom Layer</del> Outline	TID #: N/A		
PLOT NAME = New PrintOut 4	GENERATED : 19-06-2024 10:30:07 AM	TEXAS INSTRUMENTS	

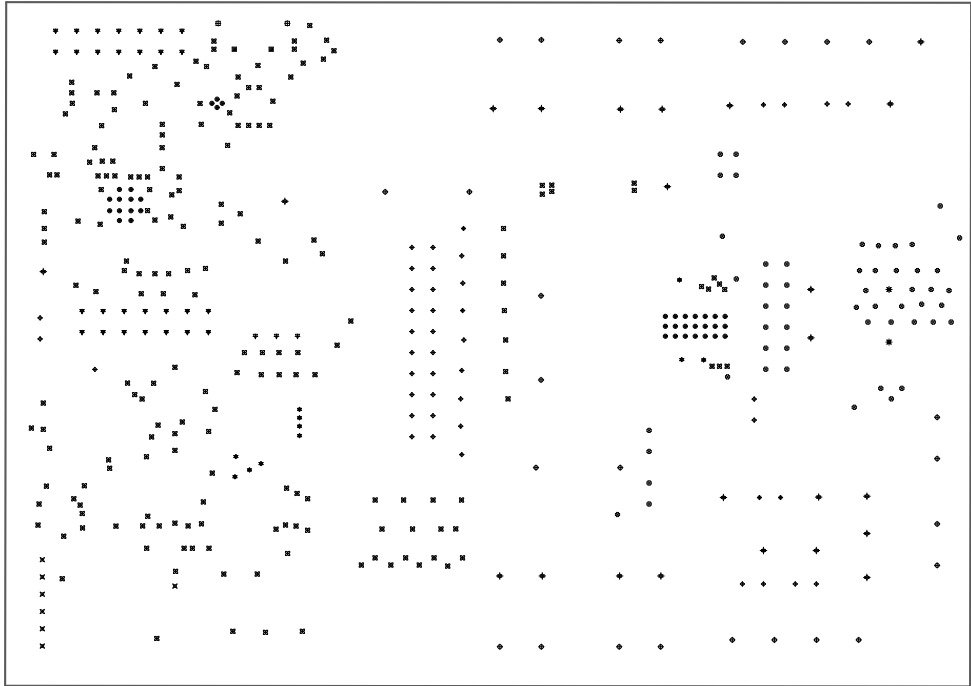


ALL ARTWORK VIEWED FROM TOP SIDE	BOARD #: DRV81242EVM	REV: E1	SVN REV: Not in version control
LAYER NAME = Bottom Solder	TID #: N/A		
PLOT NAME = New PrintOut 5	GENERATED : 19-06-2024 10:30:08 AM	TEXAS INSTRUMENTS	



ALL ARTWORK VIEWED FROM TOP SIDE	BOARD #: DRV81242EVM	REV: E1	SVN REV: Not in version control
LAYER NAME = Mid Board Outline	TID #: N/A		
PLOT NAME = New PrintOut 8	GENERATED : 19-06-2024 10:30:09 AM	TEXAS INSTRUMENTS	



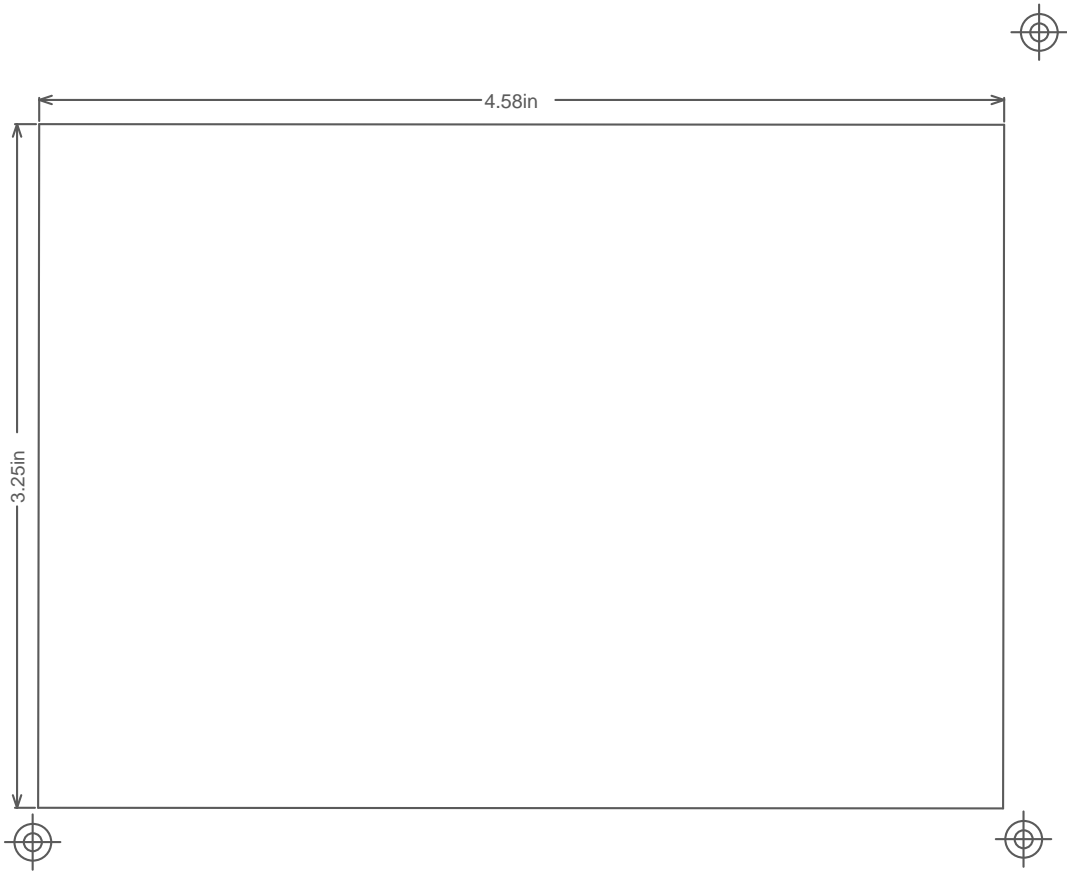


Drill Drawing :

Symbol	Quantity	Finished Hole Size	Plated	Hole Type	Drill Layer Pair	Hole Tolerance
●	37	7.87mil (0.200mm)	PTH	Round	Top Layer - Bottom Layer	+3mil/-3mil
⊙	53	8.00mil (0.203mm)	PTH	Round	Top Layer - Bottom Layer	+3mil/-3mil
⊛	11	10.00mil (0.254mm)	PTH	Round	Top Layer - Bottom Layer	+3mil/-3mil
⊞	195	16.00mil (0.406mm)	PTH	Round	Top Layer - Bottom Layer	+3mil/-3mil
⊟	7	17.72mil (0.450mm)	PTH	Round	Top Layer - Bottom Layer	+3mil/-3mil
⊠	44	40.00mil (1.016mm)	PTH	Round	Top Layer - Bottom Layer	+3mil/-3mil
▼	28	43.31mil (1.100mm)	PTH	Round	Top Layer - Bottom Layer	+3mil/-3mil
▽	3	45.28mil (1.150mm)	PTH	Round	Top Layer - Bottom Layer	+3mil/-3mil
○	26	51.18mil (1.300mm)	PTH	Round	Top Layer - Bottom Layer	+3mil/-3mil
⊗	2	59.06mil (1.500mm)	PTH	Round	Top Layer - Bottom Layer	+3mil/-3mil
⊘	23	63.00mil (1.600mm)	PTH	Round	Top Layer - Bottom Layer	+3mil/-3mil
⊞	2	25.59mil (0.650mm)	PTH	Slot	Top Layer - Bottom Layer	+3mil/-3mil
□	2	51.18mil (1.300mm)	PTH	Slot	Top Layer - Bottom Layer	+3mil/-3mil
	433 Total					

Slot definitions :  
Routed Path Length = Calculated from tool start centre position to tool end centre position.  
Hole Length = Routed Path Length + Tool Size = Slot length as defined in the PCB layout

ALL ARTWORK VIEWED FROM TOP SIDE	BOARD #: DRV81242EVM	REV: E1	SVN REV: Not in version control
LAYER NAME = Drill Drawing	TID #: N/A		
PLOT NAME = New PrintOut 6	GENERATED : 19-06-2024 10:30:11 AM		TEXAS INSTRUMENTS



ALL ARTWORK VIEWED FROM TOP SIDE	BOARD #: DRV81242EVM	REV: E1	SVN REV: Not in version control
LAYER NAME = M2 Board Dimensions	TID #: N/A		
PLOT NAME = New PrintOut 7	GENERATED : 19-06-2024 10:30:16 AM	TEXAS INSTRUMENTS	